

## Psychology Major Curriculum Change

### New Courses

The Department of Psychology has recently re-designed the required course sequence so that it provides more options and more flexibility for students.

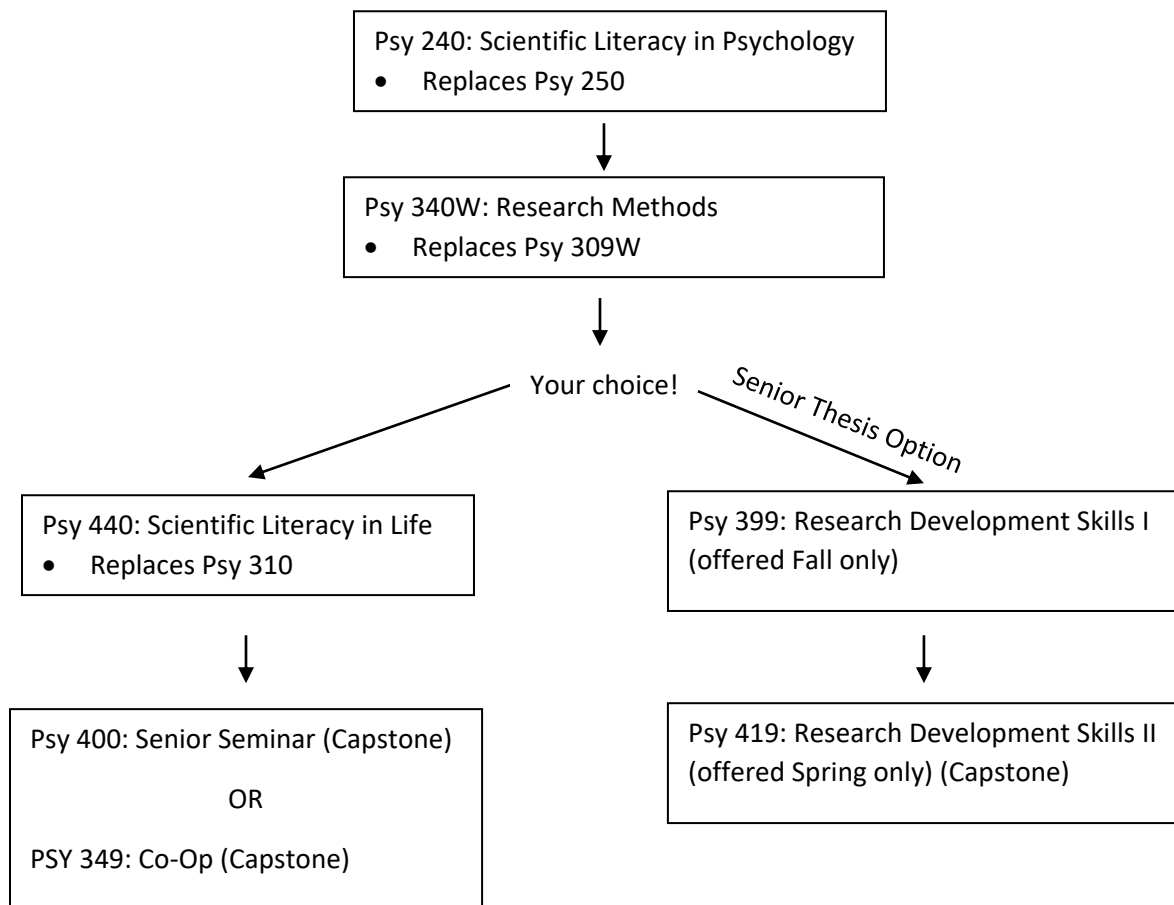
Our overall goal was to continue to provide high-quality education while also targeting the courses to the skills and knowledge you will need in whatever you choose to do after EKU.

However, there are some things that might be confusing as we switch over to the new system.

### More Flexibility

Previously, all Psych majors had to take these “scientific literacy” courses: Psy 250, 309W, and 310. Some of you might still see those classes in your Degree Works, but we have since changed the content of the courses and provided more options for students.

Here is what these options look like now:



### Which Path Should I Choose?

Ask yourself, “What are my goals?” The answer to that question will help you choose your path.

- If you are likely to get a job as soon as you graduate from EKU, or if you are likely to go into a career field that will not involve reading original research or conducting research, then taking Psy 440 and Psy 400 / Psy 349 might make more sense.
- If you plan on going into a career field that involves reading original research or conducting research, then taking Psy 399 and Psy 419 might make more sense. This includes going to graduate school.

## **FAQ's**

### **I already took Psy 250/309W/310. Do I have to take Psy 240/340W/440?**

No. If you've already completed one or more of the old courses, you won't need to take the corresponding new courses. For example, if you've already taken PSY 309W, you won't need to take PSY 340W.

### **What about pre-requisites for other courses?**

The old courses will satisfy the prerequisites for new courses. For example, if you took PSY 250, you won't have to take 240 in order to take 340W.

### **What if I want to retake one of the old courses?**

If you have taken one of the old courses and done poorly, you'll need to take the new replacement course. You won't be able to re-take the old course. For example, if you took PSY 310 and earned a D or an F, you'll need to take PSY 440 or 399.

### **I am interested in research. How can I get more involved with it?**

Several faculty in the department work closely with undergraduate students on research projects. You can get more info about starting a research mentorship at this page:

<https://psychology.eku.edu/start-mentorship-psychology-professor>

### **I still have questions. Who can I talk to?**

Please feel free to talk with your Psychology advisor if you have any questions or concerns.

### **What is covered in these new courses?**

**PSY 240 Scientific Literacy in Psychology** is a course that will help you learn the importance of the scientific approach to understanding the world. You will learn to spot and avoid using fake science that is so common in our world (especially online), evaluate sources of information, read scientific journal articles (the best source of scientific information), and communicate effectively with various audiences. All of this will be accomplished in the context of psychological findings in areas like cyberbullying, happiness, meditation, social media, and video games.

**PSY 340W Research Methods** is a course that will teach you the "ins and outs" of research, making you a savvy consumer of scientific findings. In this course, you will be given a toolkit to analyze false scientific claims in the media and refute incredulous claims from advertisers. PSY 340W has been designed to replace PSY 309W. Some of the major changes include: 1) Course credit reduction from 4 to 3 credit hours, 2) Elimination of hand calculations, and 3) Elimination of SPSS operations. Statistical analyses will be conducted via the usage of Excel spreadsheet. The skills that you gain from this course will be translatable to a variety of situations and career choices, even those that are not immediately related to the field of psychology.

**PSY 440 Scientific Literacy in Everyday Life** will help you learn how to apply scientific reasoning in your everyday life. Scientific reasoning is the most powerful intellectual tool that we have, but it is not always easy to see how to use it to make good decisions in your life. In this class, we will examine how scientific reasoning applies to your professional life (like preparing for an interview, negotiating a salary or networking) and your personal life (like managing relationships or engaging in self-care).

**Psy 399 and 419 Research Development Skills I and II.** Students may opt to develop a senior thesis research project (PSY 399 and 419). Typically, in Psy 399, you will develop your idea, do the literature search, and design the research project under the supervision of a faculty mentor. In Psy 419, you will collect and analyze the data and write your final report—and hopefully present it at a scientific conference! Please contact Dr. Jonathan Gore ([jonathan.gore@eku.edu](mailto:jonathan.gore@eku.edu)) if you are interested in conducting a senior thesis.